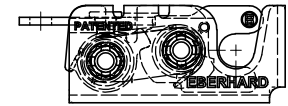
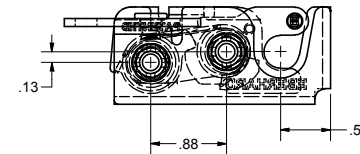
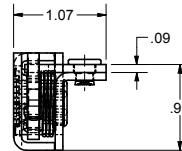
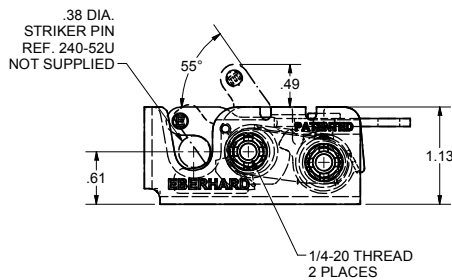
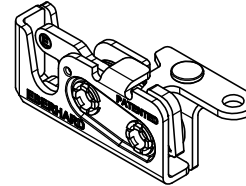
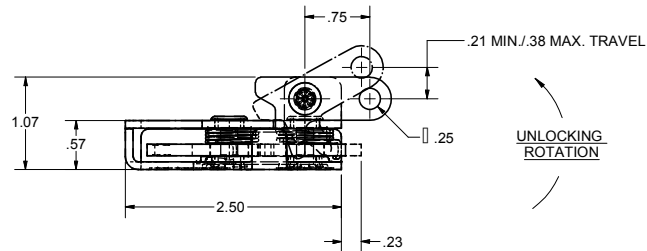


CONFIDENTIAL NOTICE: This drawing and the designs, specifications and engineering information disclosed hereon are the property of Eberhard Manufacturing Company and are not to be disseminated or reproduced without express written consent. The drawing is loaned in confidence and then only for consideration of the matter disclosed hereon. In accepting loan of this drawing, recipient agrees to keep it and the matter disclosed hereon in confidence and not to use nor permit their use in any way detrimental to Eberhard Manufacturing Company, Division of the Eastern Company, 2184 Drake Road, Cleveland, Ohio 44143-9712. © 2012 EBERHARD MFG. CO.

REVISION HISTORY				
REV	DESCRIPTION	EN	DATE	REV BY
1	REVISED, REDRAWN AND CONVERTED TO 3D	STJ	5-28-12	FLP
1	REVISED NOTE	STJ	3-4-16	MR



1-240-L
LEFT HAND
MINI-ROTARY LOCK



- NOTES:
1. USE 1/4-20 GRADE 8 BOLTS FOR INSTALLATION. RECOMMENDED TORQUE FOR TIGHTENING: 14 FT./LBS.
 2. MAX LOAD RATING: 750 LBS
 3. FINISHES:
 - A. EVERLUBE INTERNAL COMPONENTS, FC (54)
 - B. BEARING GREASE WITH EVERLUBE INTERNAL COMPONENTS, FC (BG)
 - ④ 4. TO ORDER 50 PCS. PER BOX, ORDER: 1-240-R/L-BX50-54 OR 1-240-R/L-BX50-BG.

PATENTED
CUSTOMER PRINT
SHEET 1 OF 2
RIGHT HAND SHOWN
LEFT HAND OPPOSITE



MINI-ROTARY IS A TRADEMARK OF EBERHARD MFG. CO.
DIVISION OF THE EASTERN COMPANY

EBERHARD MANUFACTURING CO. DIVISION OF THE EASTERN COMPANY CLEVELAND, OHIO 44143-9712	
TWO STAGE MINI-ROTARY LOCK	
PART NUMBER: 1-240-R/L QUANTITY: 50 DATE: 5/27/2012	REV: 1 DATE: 5/27/2012 BY: FLP
ANGLE: 0.0 2 PLACE DEC: 0.05 3 PLACE DEC: 0.015 4 PLACE DEC: 0.005	FULL PART NUMBER: 1-240 R/L

SUPERSEDES DRAWING 1-240 RL SH1 DATED 5-28-96.