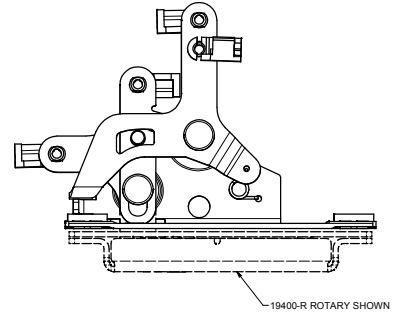
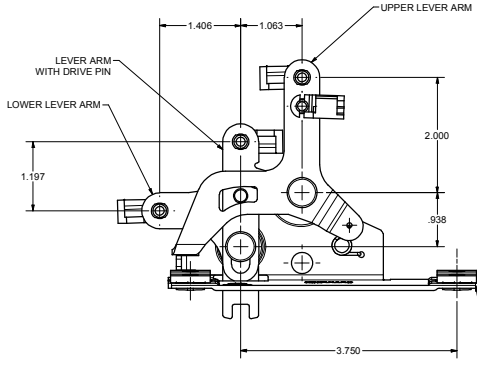
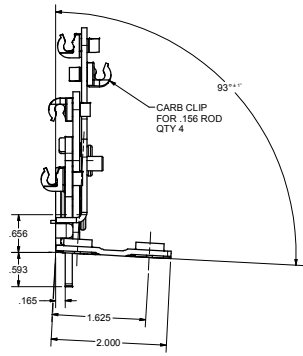
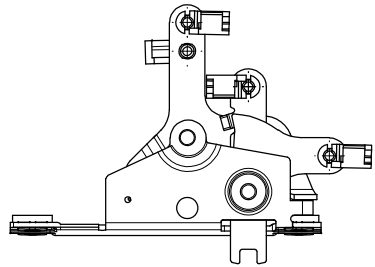
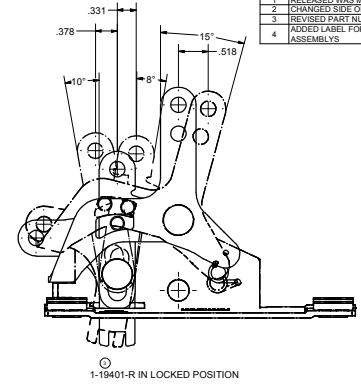
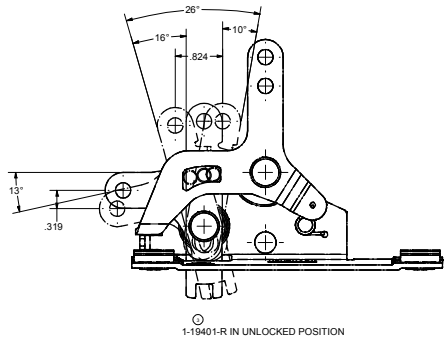
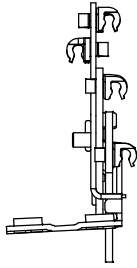
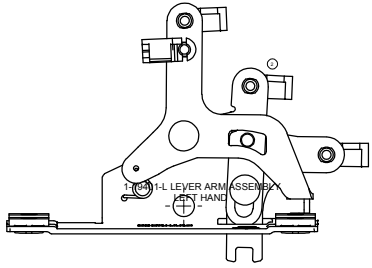
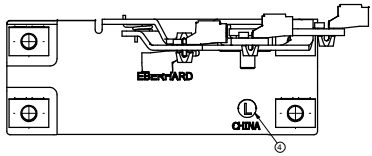


CONFIDENTIAL NOTICE: This drawing and the design, identification and application of the herein disclosed matter are the property of Eberhard Manufacturing Company, and are not to be disseminated or reproduced without express written consent. The drawing is issued in confidence and the user is hereby notified that any disclosure, use, copying, reproduction, modification, or other use of the drawing or the matter disclosed herein is prohibited and not to be used for any purpose other than that for which it was originally intended.

REVISION HISTORY					
REV.	DESCRIPTION	EN.	DATE	REV. BY	APVD. BY
1	RELEASED WAS M10673	5574	10/26/2013		
2	CHANGED SIDE OF CARB CLIP ON 1-19401-L	5601	3/26/2013		
3	REVISED PART NUMBER ON VIEW	5605	5/24/2013		
4	ADDED LABEL FOR RIGHT & LEFT HAND ASSEMBLY	5741	2/26/2016	KAB	MR



NOTES:  
 1) TO BE USED WITH ROTARY 19400-R/L AND EBERHARD COMPLIANT FMVSS 206 STRIKER OR EQUIVALENT.  
 2) FINISH: (BG) BEARING GREASE WITH ZINC AND ZINC/YELLOW PLATED COMPONENTS.

RIGHT HAND SHOWN  
 LEFT HAND OPPOSITE  
 CUSTOMER PRINT  
 SHEET 1 OF 2

THIS DOCUMENT IS UNCLASSIFIED WITH A DATE OF 11/14/2008 BY 60322/UCBAW/STP/STP		FORM 3	DATE
UNCLASSIFIED	DATE	BY	DATE
CLASSIFIED BY	DATE	BY	DATE
DECLASSIFIED BY	DATE	BY	DATE
ANGLES:	22	17	17
SPACE DEC:	A 03	A 36	1
SPACE DEC:	A 03	A 36	1
ALL ANGLES:	A 03	A 36	1

EBERHARD MANUFACTURING CO.  
 DIVISION OF  
 THE EASTERN COMPANY  
 CLEVELAND, OHIO 44116-9712

LEVER ASSEMBLY

1-19401-R/L