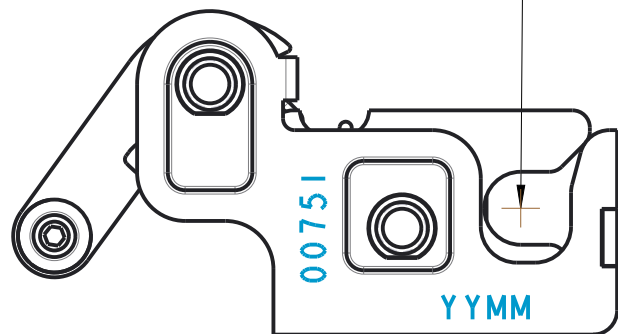
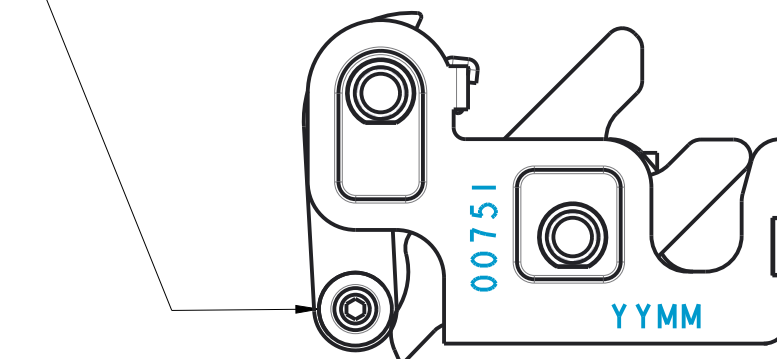


REQUIRED PUSH TEST OF 8-12 LBS AT CENTER OF HOLE WITH PULL LATCH HELD IN THE OPEN POSITION.

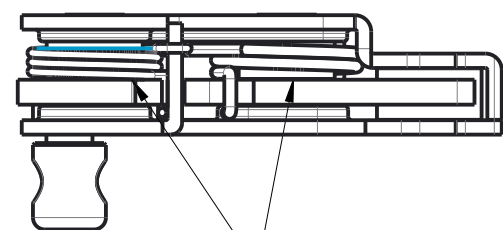
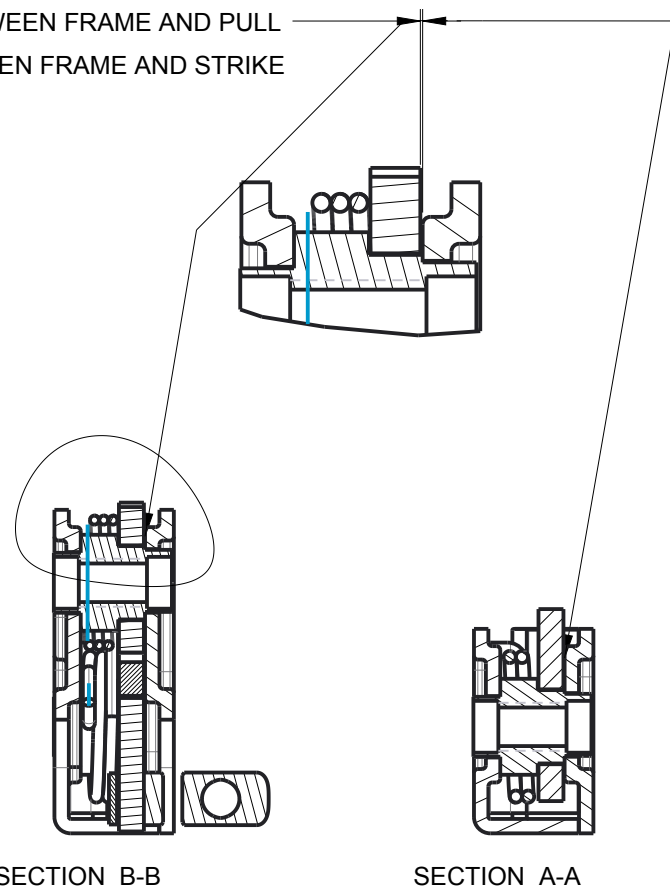


REQUIRED PULL TEST AT OF 2.25 LB - 3.0 LB FOR MOVEMENT 0 - 0.250" CENTER OF CABLE CLAMP WITH STRIKE LATCH IN THE TRIPPED OPEN POSITION

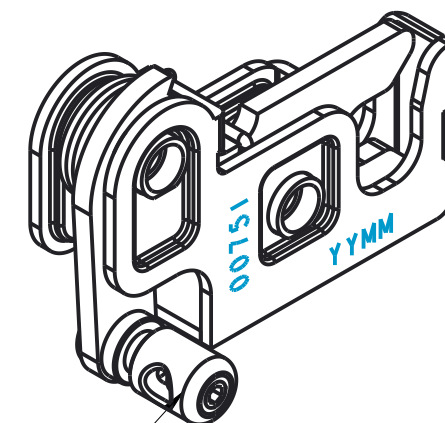
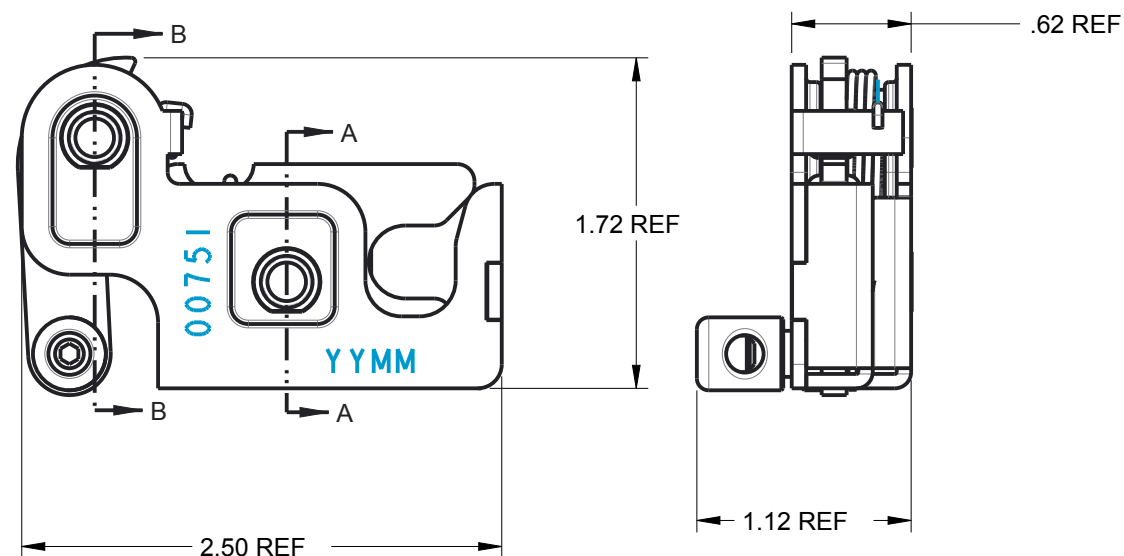


PART	REV	DESCRIPTION	QTY
00748	C	SIDE FRAME, LH, R4	1
00292	K	SPRING, PULL LATCH, LW, 0.650" OD X 0.132", 0.047" WD	1
00291	L	MAIN FRAME, LH	1
00198	H	CABLE CLAMP, POWER GROOVE, CRS, FINISH AFTER ASSEMBLY	1
00197	M	AXLE	2
00196	F	PULL LATCH	1
00194	H	STRIKE LATCH	1
00091	D	WASHER, CRS, 0.375" OD x 0.155" ID x 0.050"	1
00057	J	SPRING, STRIKE LATCH, LH, 0.079" X 0.180", 0.063" WD	1
00029	E	SET SCREW, HEX-0.094, #10-32, 0.250	1

.0100 GAP BETWEEN FRAME AND PULL
.0050 AND GAP BETWEEN FRAME AND STRIKE



APPLY LIGHT OIL TO SPRINGS AND AXLES



00198 CABLE CLAMP MUST SPIN FREELY IN 00196 PULL LATCH

BUILD TOLERANCES X.X ±0.030 X.XX ±0.015 X.XXX ±0.005 X.XXXX ±0.003 ANGLES ±1° INSP. PT.	FINISH:	BLACK E-COAT COMPLETE ASSY	MATL:	ASSY	DWG SIZE B			
	DESCRIPTION:	R4 ROTARY LATCH, LH, 10 lbs						
	REV. LEVEL:	G	REV. DATE:	11-08-17		DETAILED BY: DTH REVISED BY: LJH CHECKED BY:		
	ECN #:	368	SHEET 1 OF 1	UNITS:		INCH	SCALE:	SEE NOTES

P/N: **00751**

www.loadnlocksystems.com